

20

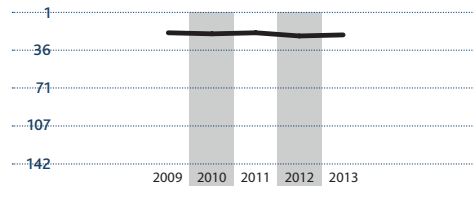
FRANCE

SUB-INDICES

EUROPE RANKING

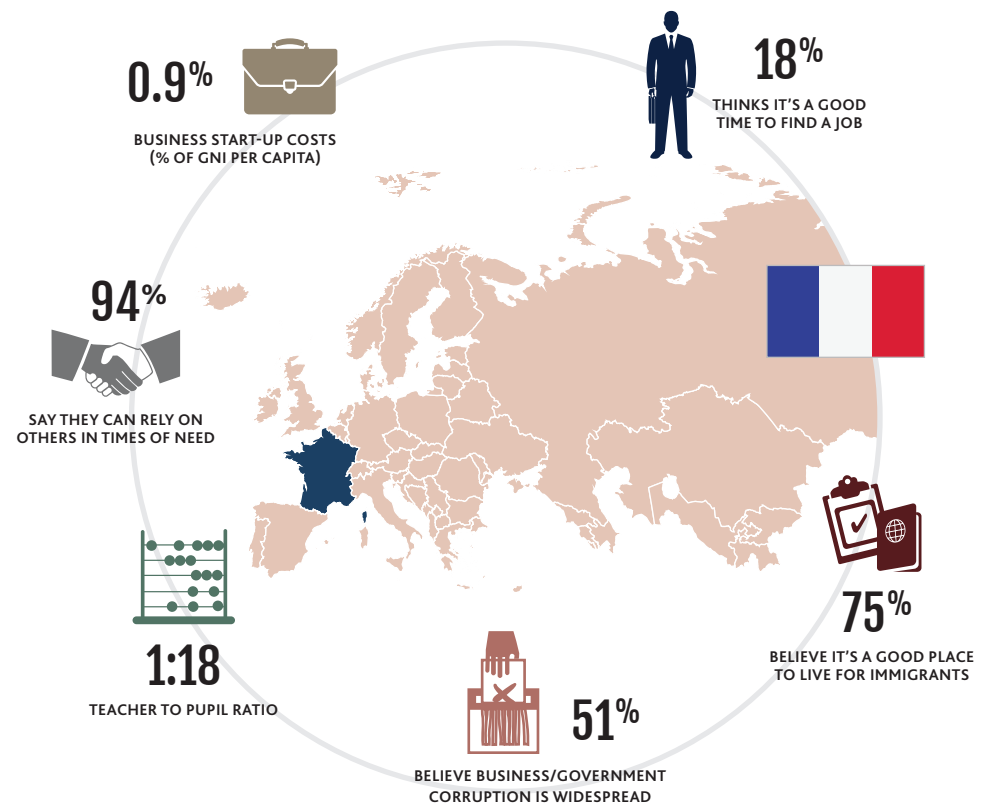
Norway	1
Switzerland	2
Sweden	4
Denmark	6
Finland	8
Netherlands	9
Luxembourg	10
Ireland	12
Iceland	13
Germany	14
Austria	15
United Kingdom	16
Belgium	17
France	20
Spain	23
Slovenia	24
Malta	25
Portugal	27
Czech Republic	29
Italy	32
Poland	34
Estonia	36
Cyprus	37
Slovakia	38
Hungary	41
Lithuania	43
Latvia	48
Bulgaria	49
Croatia	53
Greece	54
Romania	55
Belarus	58
Russia	61
Ukraine	64
Montenegro	71
Serbia	76
Macedonia	79
Azerbaijan	81
Albania	83
Georgia	84
Moldova	89
Armenia	95
Bosnia-Herzegovina	97

PERFORMANCE



"This decline over five years is, in part, due to the addition of 32 new countries in the 2012 Prosperity Index. In this instance, one of these new countries placed above France."

- » France dropped by one place in overall prosperity, to 20th globally.
- » The Social Capital sub-index dropped by ten places to 42nd as a result of a decrease in donation levels and low levels of trust between people.
- » The Economy sub-index dropped four places to 22nd as a result of a decrease in gross domestic savings and confidence in financial institutions, and an increase in the unemployment levels.



Sub-Index	Category	Year	Data	Global Av.	
22	ECONOMY	5 year growth rate	2011	0%	2.7%
		Confidence in financial institutions?* (% yes)	2012	33.3%	59.5%
		Satisfaction with living standards?* (% yes)	2012	83.4%	58.2%
21	ENTREPRENEURSHIP & OPPORTUNITY	R&D expenditure (% of GDP)	2011	2.1%	0.8%
		Mobile phones (per 100 ppl)	2012	98.1	103.9
		Will working hard get you ahead?* (% yes)	2012	75.2%	81.0%
19	GOVERNANCE	Confidence in the government?* (% yes)	2012	47.4%	51.5%
		Confidence in the judiciary?* (% yes)	2012	53.8%	52.1%
		Government effectiveness ¹	2011	1.36	0.04
19	EDUCATION	Gross secondary enrolment rate	2011	113.6%	79.3%
		Satisfaction with education quality?* (% yes)	2012	76.1%	66.3%
		Perception children are learning?* (% yes)	2012	84.9%	70.2%
8	HEALTH	Self-reported health problems?* (% yes)	2012	16.0%	23.9%
		Hospital beds* (per 1000 people)	2010	6.6	3.1
		Satisfaction with health?* (% yes)	2011	88.9%	78.2%
30	SAFETY & SECURITY	Human flight ²	2012	1.8	5.3
		Safe walking alone at night?* (% yes)	2012	72.3%	62.8%
		Property stolen in past 12 months?* (% yes)	2012	12.7%	16.5%
21	PERSONAL FREEDOM	Civil liberties ³	2012	7	4.7
		Tolerance for ethnic groups?* (% yes)	2012	77.4%	68.0%
		Satisfaction with freedom of choice?* (% yes)	2012	84.1%	71.7%
42	SOCIAL CAPITAL	Volunteered time in past month?* (% yes)	2012	25.2%	20.1%
		Donated to charity in past month?* (% yes)	2012	24.1%	28.3%
		Helped strangers in past month?* (% yes)	2012	35.2%	47.9%

NOTES: ¹Gov. effectiveness: values range from -1.66 to 2.25, higher values indicate higher effectiveness. ²Human flight: values range from 1 to 10, higher values indicate higher levels of human flight. ³Civil liberties: values range from 1 to 7, lower values indicate lack of civil liberties. *Survey data are taken from Gallup World Poll.